

“Secur-a-Latch”[®] Privacy Latch



The privacy latch for entry fire doors. The flip design accommodates requirements for a fire door to self-latch.

Designed for simple use with push-to-engage and touch-to-release functionality.

Specifications



Compatibility

Universal door compatibility: inswing & outswing.

Height

67mm

Width

38mm

Features



- * Compliant with AS 1905.1 – 2015
- * Tested on Pyropanel FR Core (maxi's & mini's) & Pandor
- * Tested on E-Core
- * Eliminates door leaf damage caused by traditional privacy guards
- * Flip function prevents accidental lock out
- * Allows for 13mm view into hallway
- * Three fixing points for easy installation or retrofitting
- * Compact design



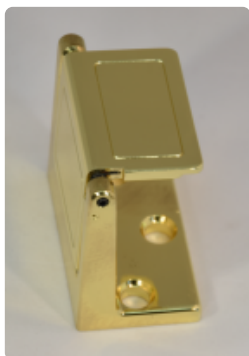
Exclusively Distributed throughout Australia by

Touchwood Doors

Ph: 07 3519 5885

E: enquiries.touchwood@assaabloy.com

Finishes



US3
Bright Brass



US4
Satin Brass



US10
Satin Bronze



US10B
Dark Bronze



US14
Bright Nickel



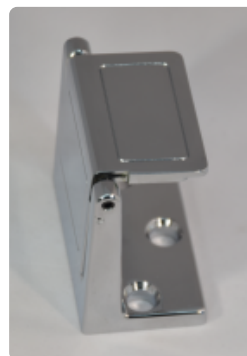
US15
Satin Nickel



US17A
Satin Black
Nickel



US19*
Flat Black



US26
Bright Chrome



US26D*
Satin Chrome

***Stock Item**

[Click Here to Contact Us Now](#)



Exclusively Distributed throughout Australia by
Touchwood Doors
Ph: 07 3519 5885
E: enquiries.touchwood@assaabloy.com